



# ECR Minerals (LON:ECR)

The search for the Next Multi-Million Ounce  
Gold Discovery

# Disclaimer

This presentation is being supplied to you by ECR Minerals plc (the "Company") solely for your information and may not be reproduced or redistributed in whole or in part. This document has not been approved by a person authorised under the Financial Services and Markets Act 2000 ("FSMA") for the purposes of section 21 FSMA.

This presentation does not constitute, or form part of, a prospectus relating to the Company nor does it constitute or contain any invitation or offer to any person to underwrite, subscribe for, otherwise acquire, or dispose of any shares in the Company or to advise persons to do so in any jurisdiction, nor shall it form the basis of or be relied upon in connection with any contract or commitment whatsoever. Recipients of this presentation who are considering a purchase of shares in the Company are reminded that any such purchase must be made solely on the basis of information that the Company has released into the public domain.

Whilst all reasonable care has been taken to ensure that the facts stated in this presentation are accurate and that any forecasts, opinions and expectations contained in this presentation are fair and reasonable, the information contained in this document has not been independently verified and accordingly no representation or warranty, express or implied, is made as to the accuracy, fairness or completeness of the information or opinions contained in this presentation. None of the Company, its shareholders or any of their respective advisers, parents or subsidiaries nor any of their respective directors, officers, employees or agents (including those of their parents or subsidiaries) accepts any liability or responsibility for any loss howsoever arising, directly or indirectly, from any use of this presentation or its contents.

This presentation does not constitute a recommendation regarding the shares of the Company. Recipients of this presentation should conduct their own investigation, evaluation and analysis of the business, data and property described therein. If you are in any doubt about the information contained in this presentation, you should contact a person authorised by the Financial Conduct Authority who specialises in advising on securities of the kind described in this presentation.

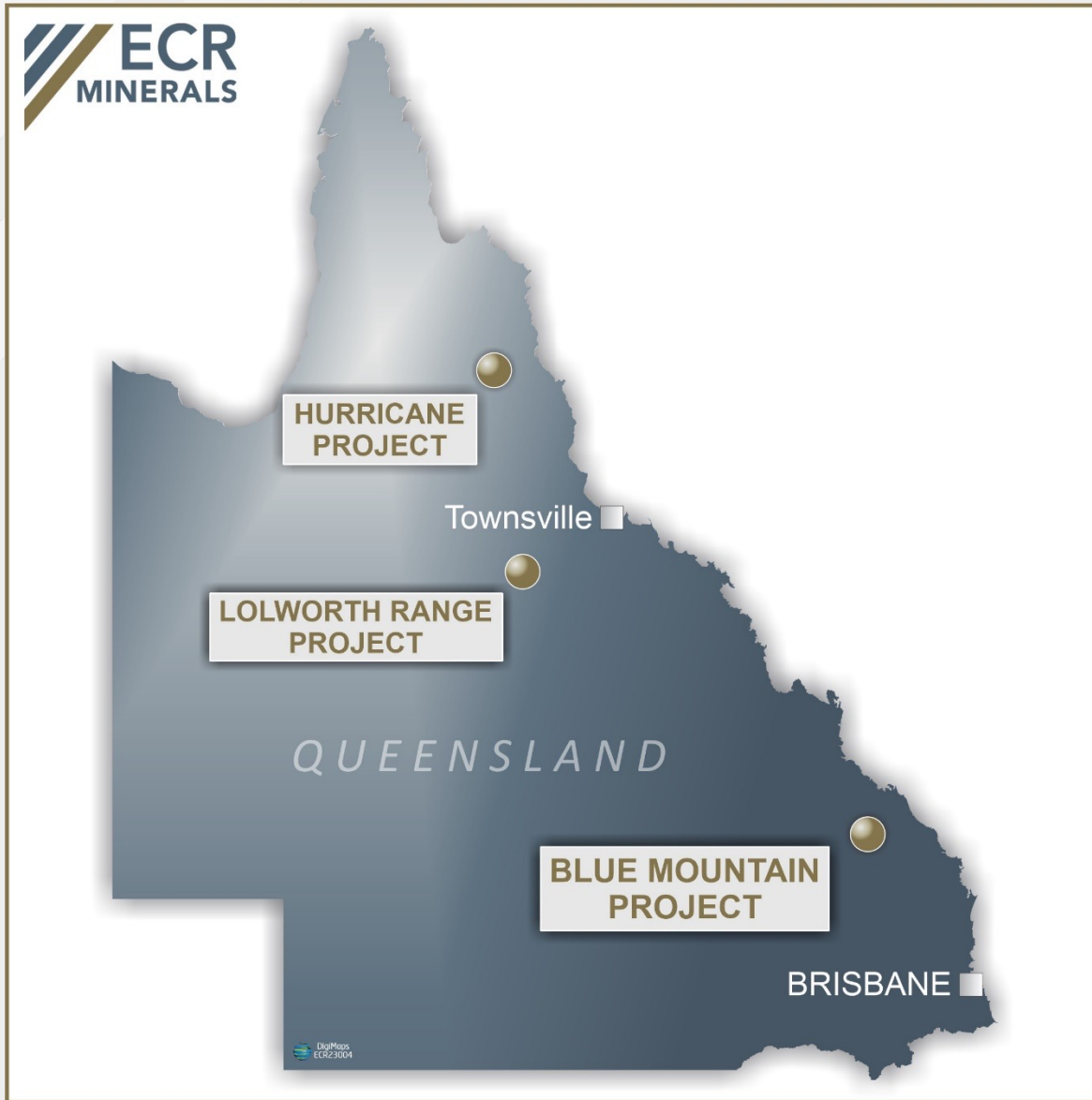
Certain statements within this presentation constitute forward looking statements. Such forward looking statements involve risks and other factors which may affect the actual results, achievements or performance expressed or implied by such forward looking statements. Such risks and other factors include, but are not limited to, general economic and business conditions, changes in government regulations, currency fluctuations, the gold price, the Company's ability to recover its resources/reserves or develop new resources/reserves, competition, changes in development plans and other risks. Some statements may constitute the opinions of the Company's directors.

There can be no assurance that the results and events contemplated by the forward looking statements contained in this presentation will, in fact, occur. These forward looking statements are correct or represent honestly held views only as at the date of delivery of this presentation.

The Company will not accept any obligation to release publicly any revisions to these forward looking statements to reflect events, circumstances and unanticipated events occurring after the date of this presentation except as required by law or by regulatory authority.

By accepting this presentation, you agree to be bound by the above provisions and limitations and to keep permanently confidential the information contained in this presentation or made available in connection with further enquiries to the extent such information is not made publicly available (other than through a breach by you of this provision).

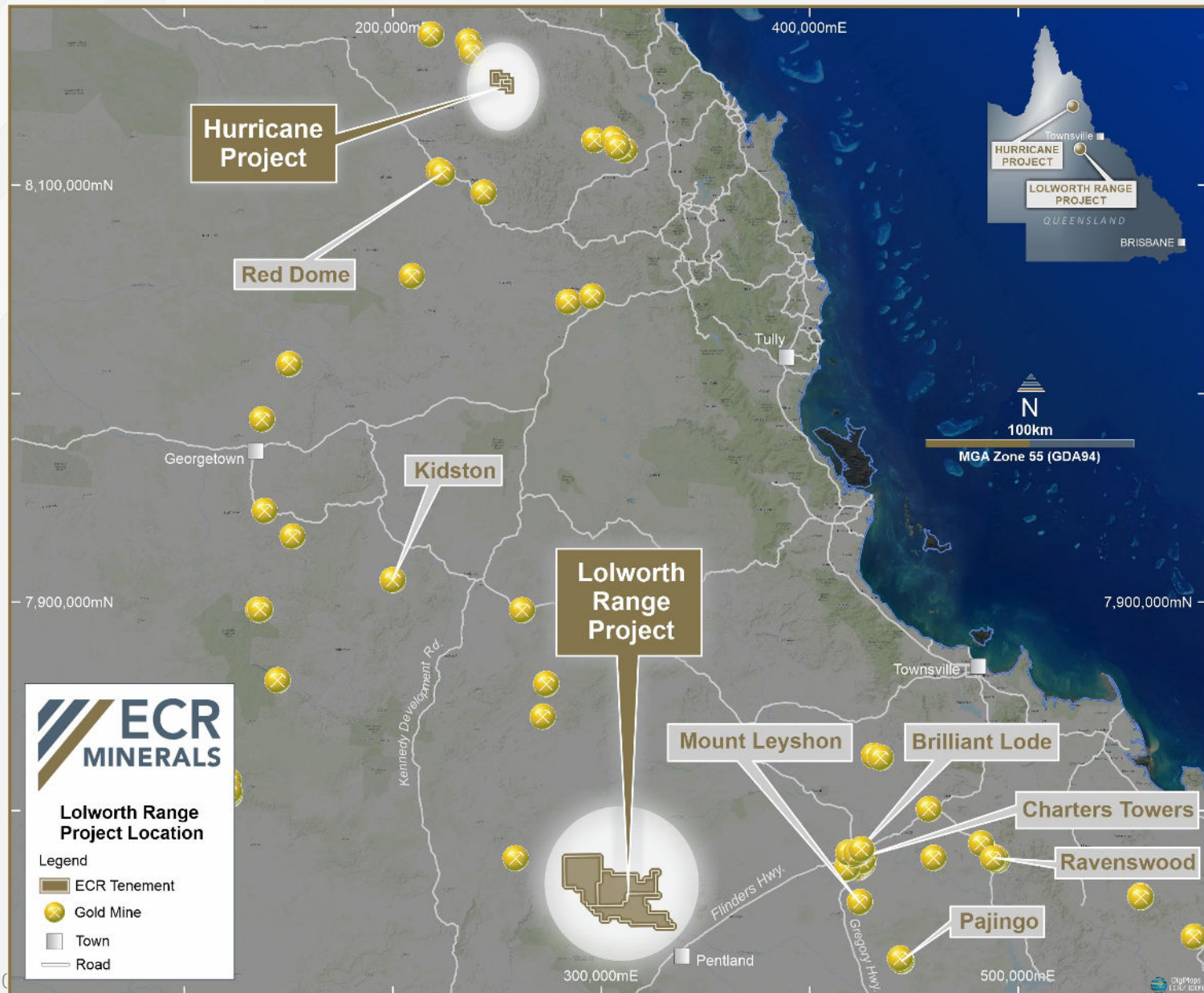
# Queensland – work commences now



- Hurricane - drilling gold and antimony veins – never drilled
- Lolworth
  - numerous gold in streams to be followed up now
  - Large zone of Niobium Tantalum in streams discovered recently – follow up commencing now
- Blue Mountain – newly acquired first follow up of gold to commence shortly



# Why North Queensland? - Multi Million oz discoveries





# Lolworth – 100% ECR



Granted 2022

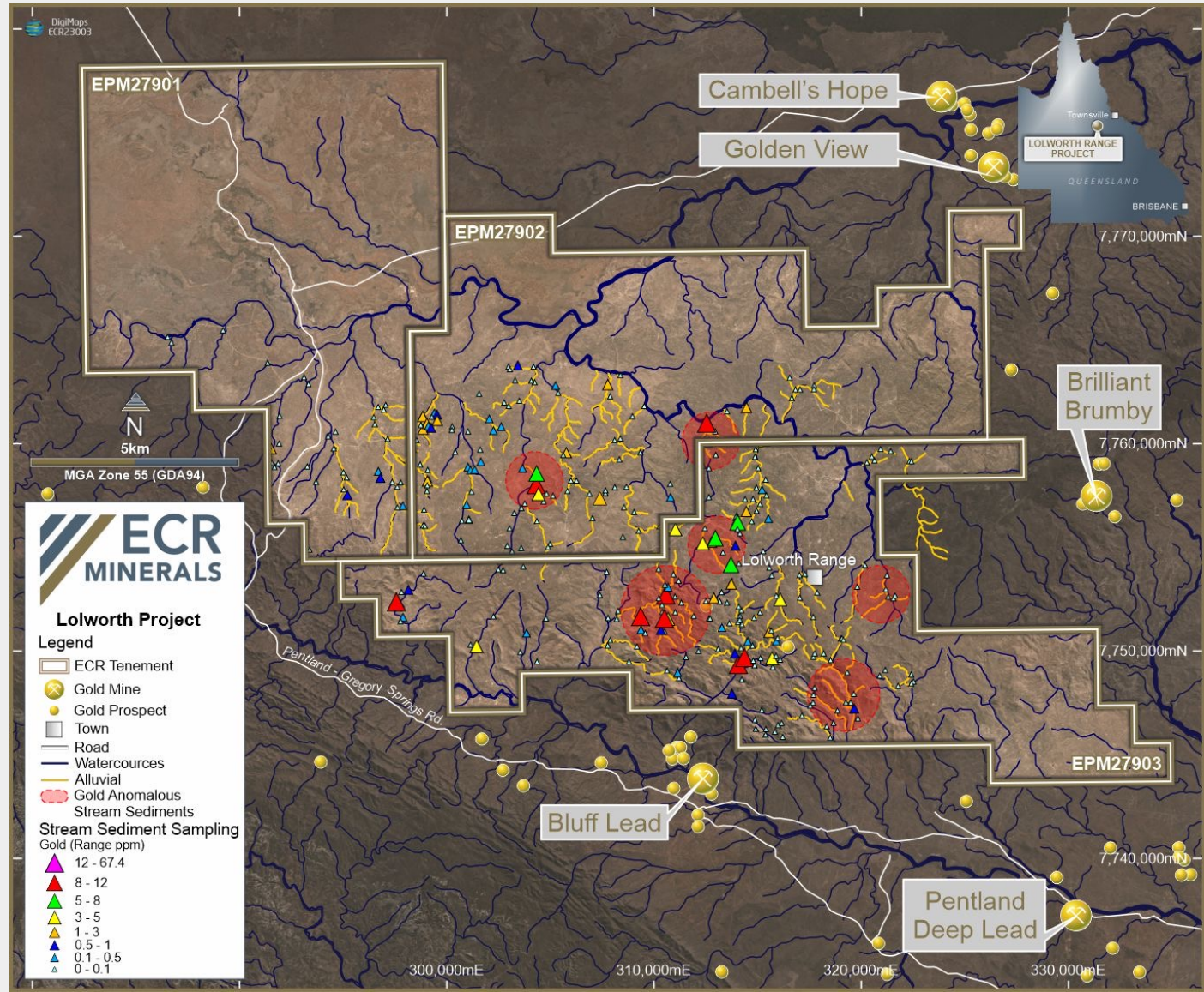
Visible gold in numerous stream sediment samples from 1980's

ECR confirmed >30 gold in streams

Follow up gold and Nb-Ta in streams in progress.

Large Nb-Ta anomaly and REE potential

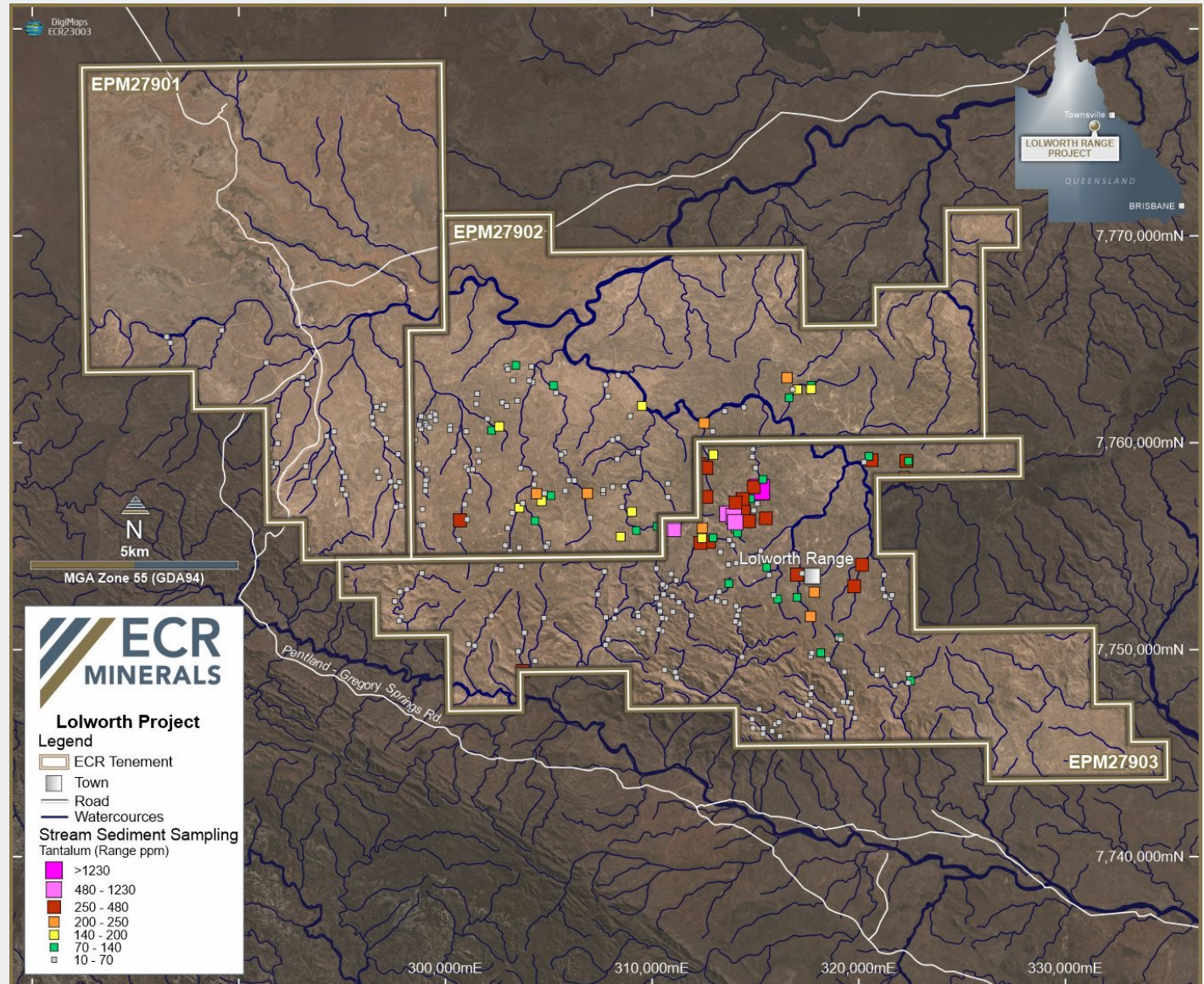
01/06/2023





# Lolworth – Tantalum

- Not just Visible Gold...
- Also broader compelling stream geochemical anomalies in panning
- Ta-Nb identified
- 10km strike anomaly Ta-Nb
- Over 400 samples taken over 1<sup>st</sup> field season (2022).

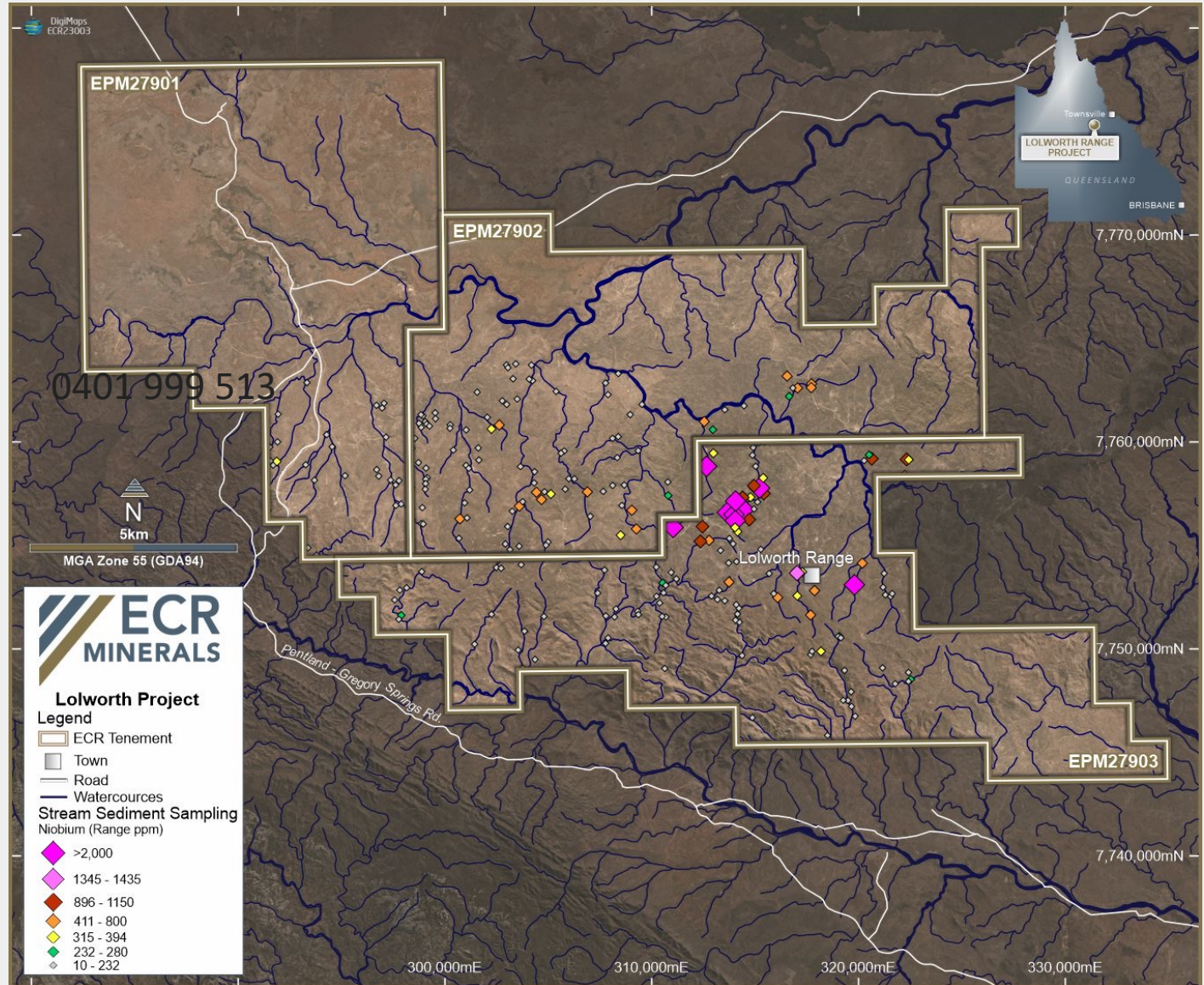




# Lolworth – Niobium

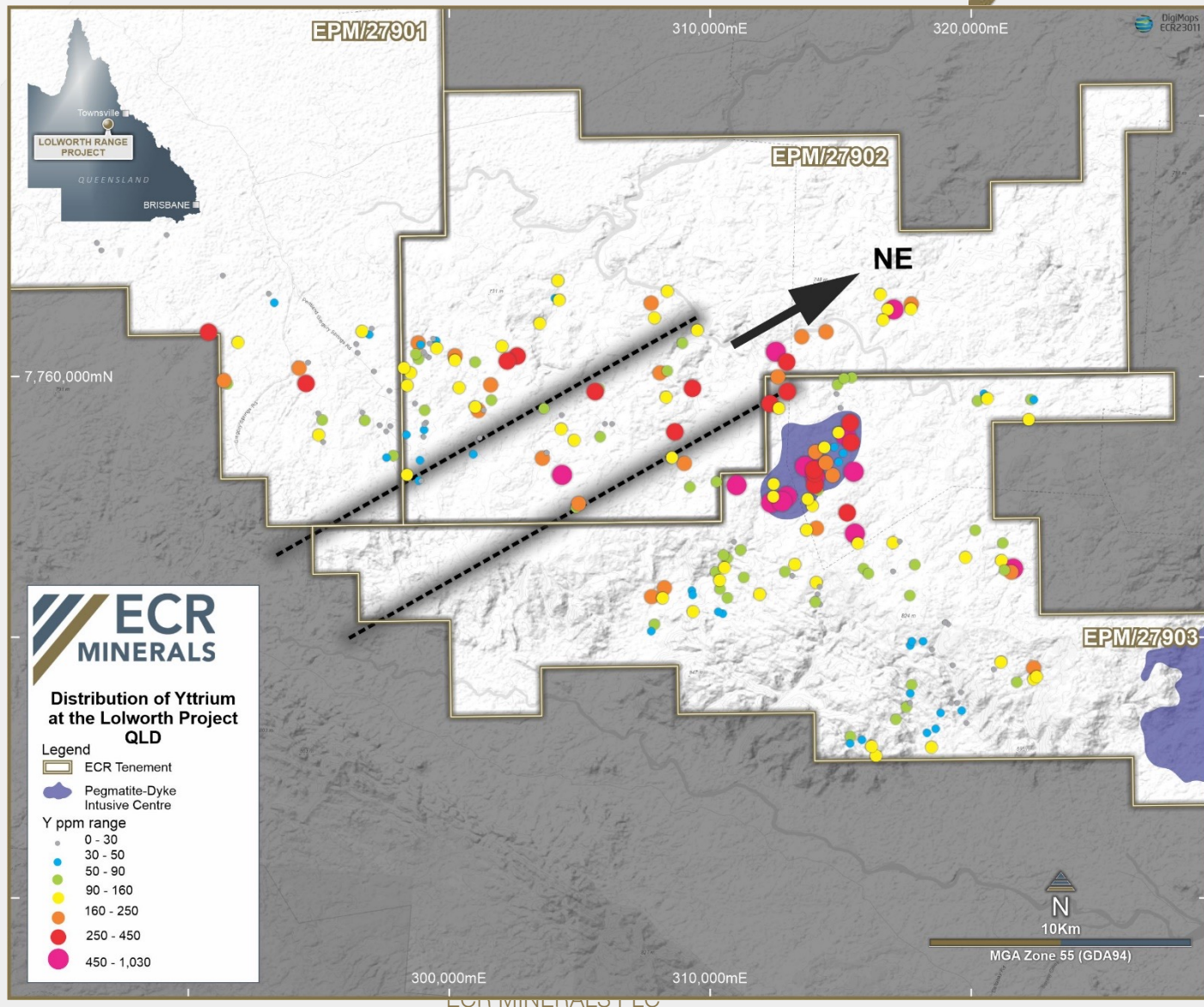


- Not just Visible Gold...
- Nb identified
- 10km strike anomaly Ta-Nb

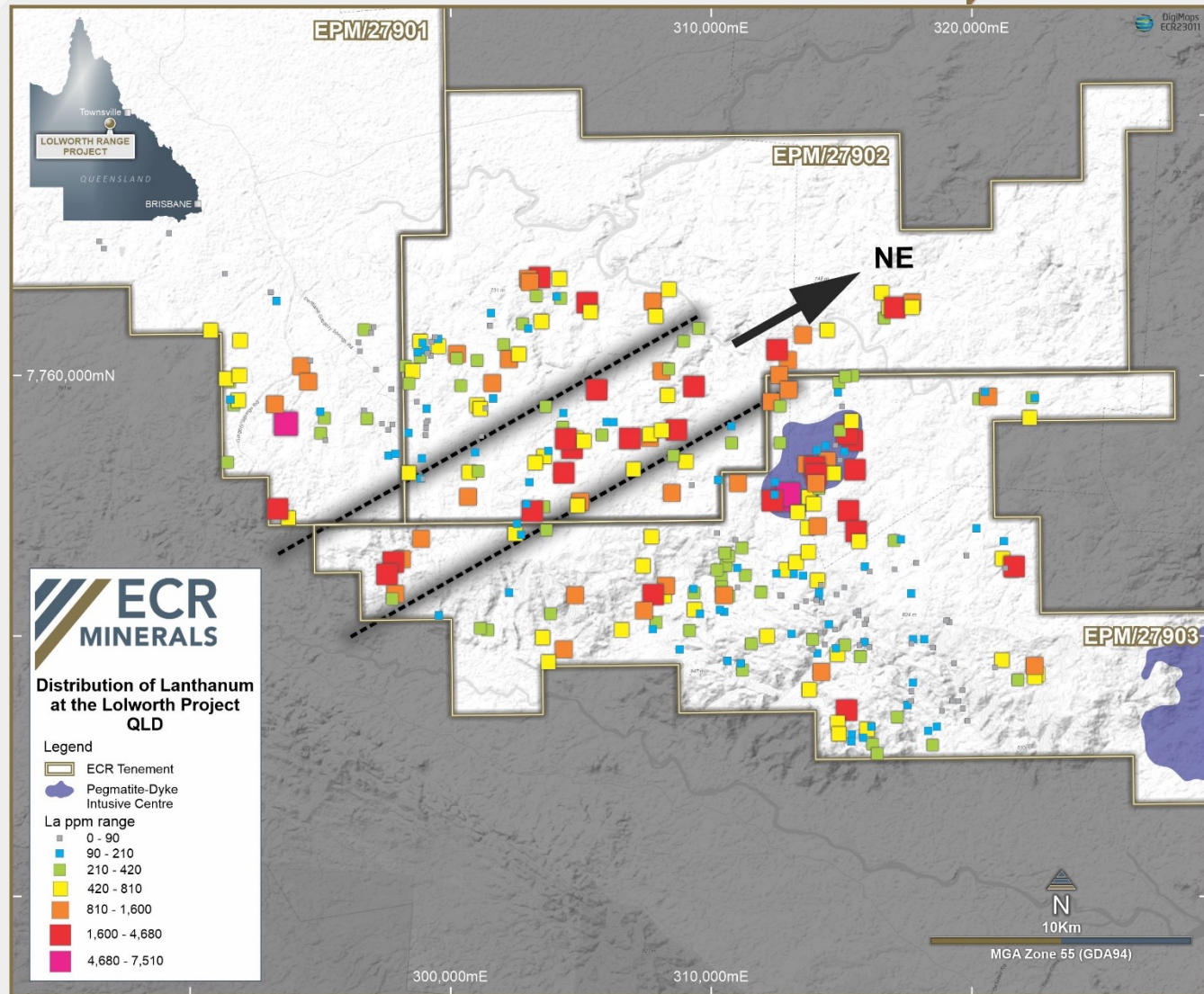




# Lolworth – Yttrium

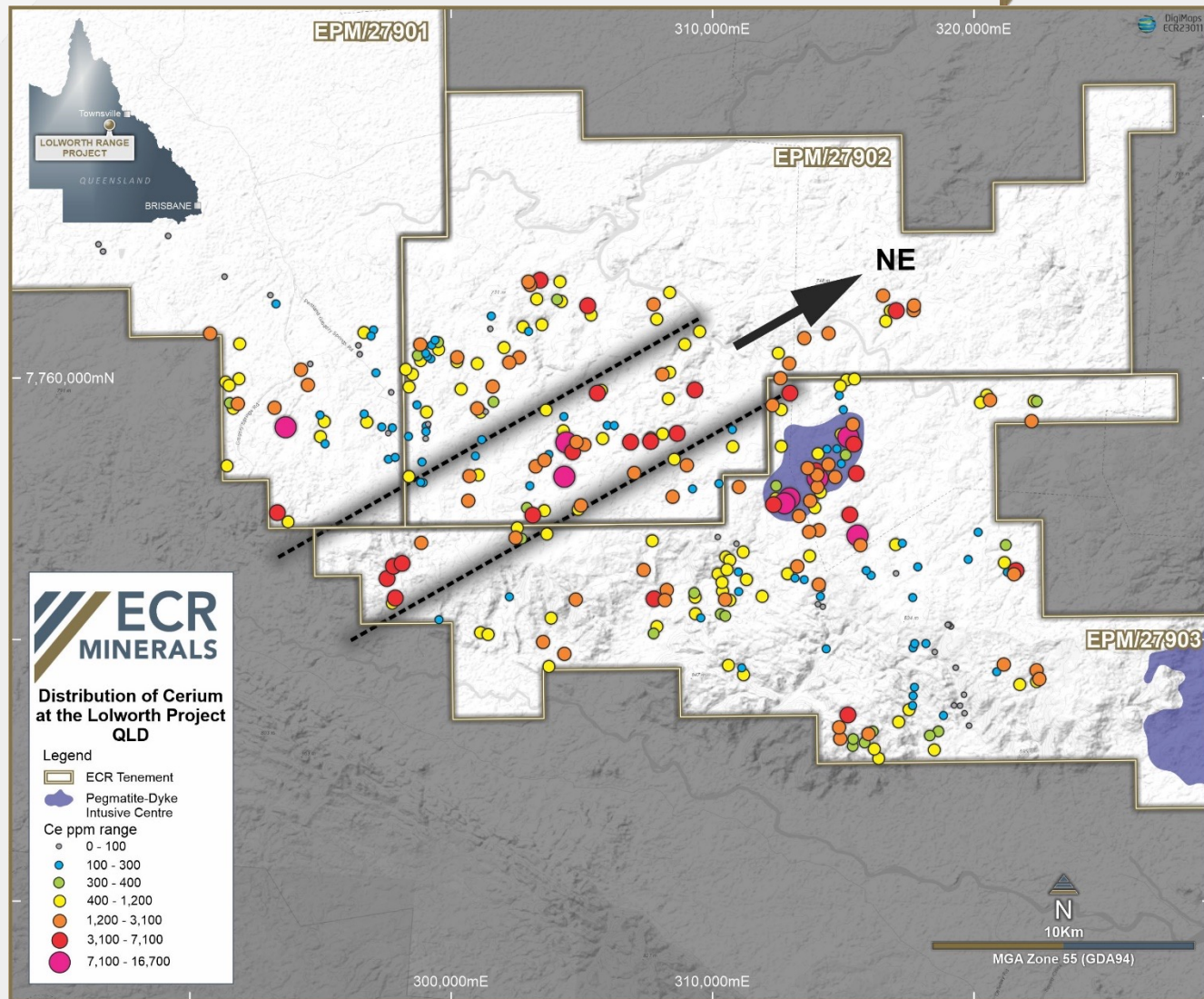


# Lolworth – lanthanum





# Lolworth – Cerium

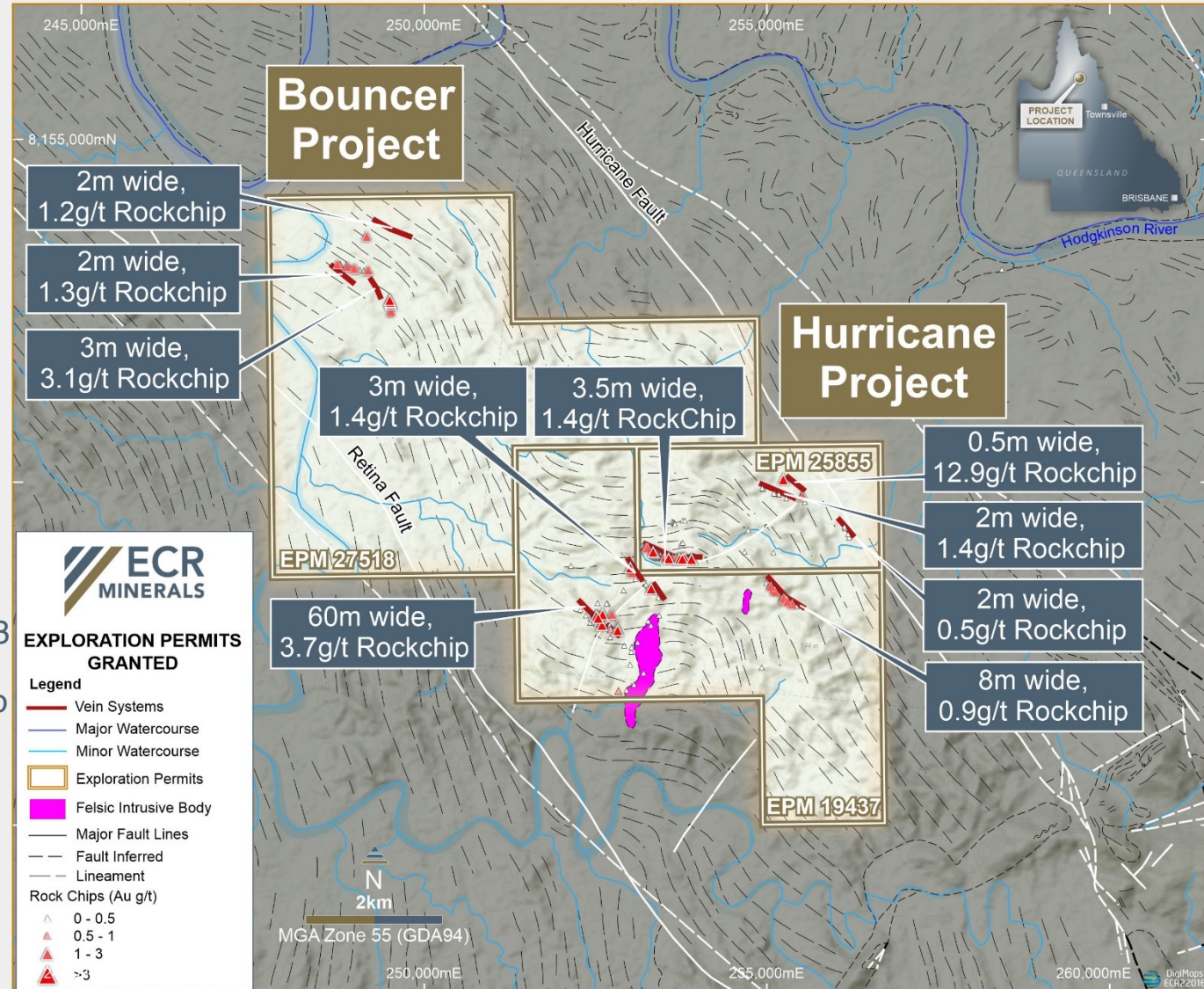




# Hurricane Nth QLD – Veins and Grades



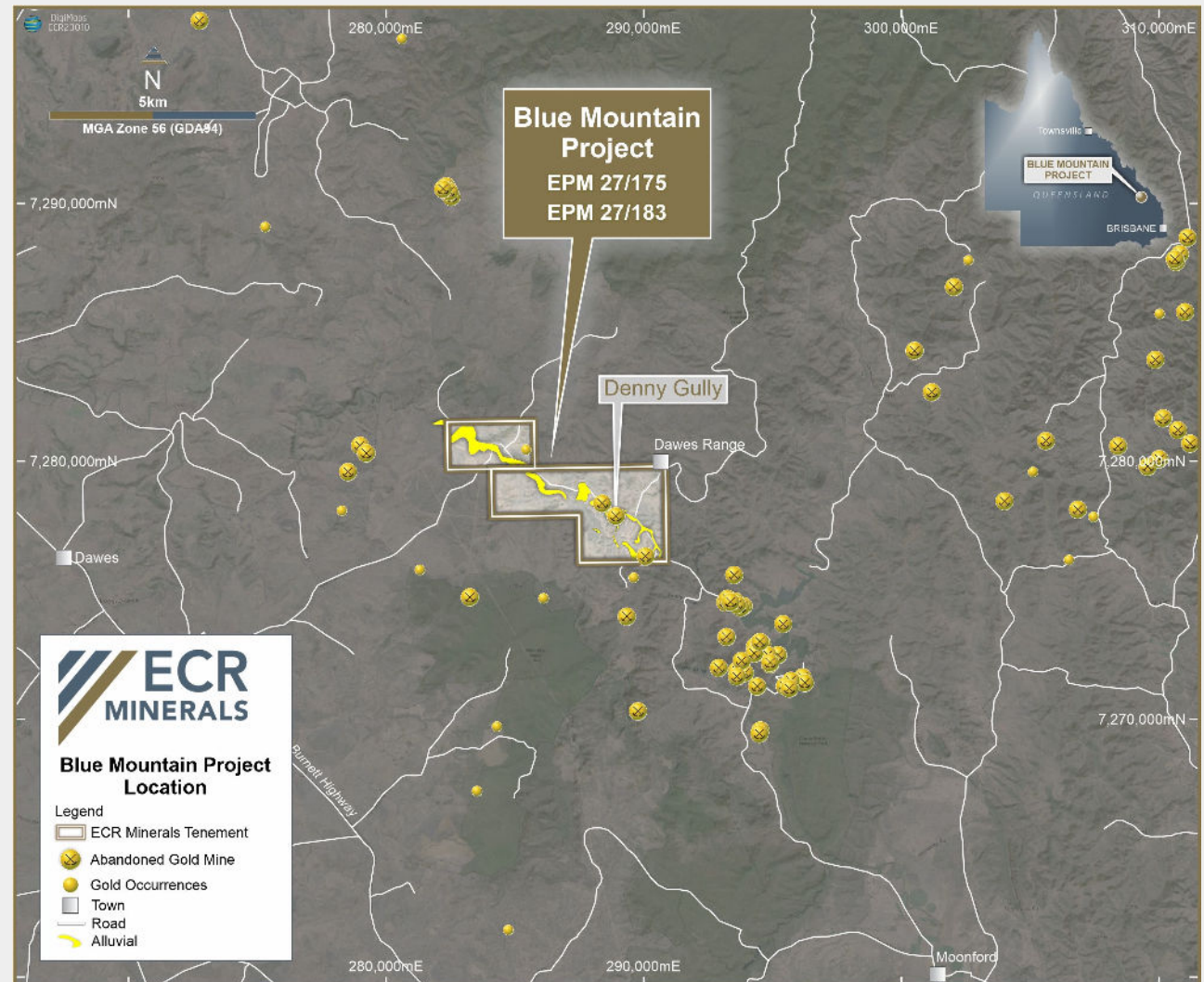
- Numerous gold veins at surface
- Grades range 1- 20g/t
- Widths 0.5-7m
- One 60m width
- Undrilled
- Discovered 5 years ago.
- ECR option to buy 100% for cash and shares in 2023
- Drilling planned July 2023
- High grade Antimony also present.
- ECR can exercise the option to buy 100% in 2023



# Blue Mt QLD – the search for the source



- Significant alluvial gold recorded
- The primary source has not been discovered
- ECR is completing purchase formalities
- Copper also recorded in the area
- Central Queensland Tasman orogenic belt hosts the fabulously rich Mt Morgan Gold Copper mine which operated for some 50 years





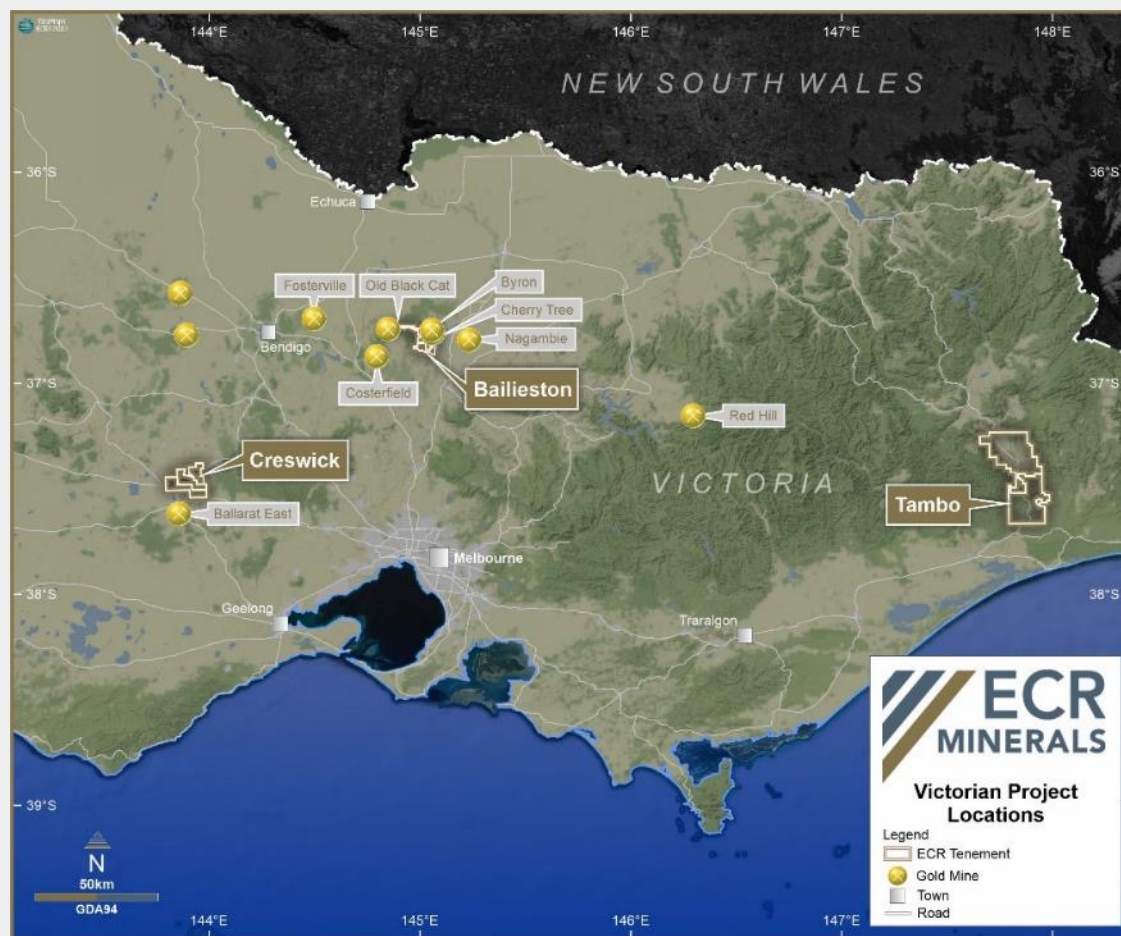
# Victoria – Gold

ECR has granted and application licences totalling some 1,175km<sup>2</sup>.

**Bailieston** located close to the Fosterville Mine (Kirkland Lake Gold)  
District known for Gold-Antimony.

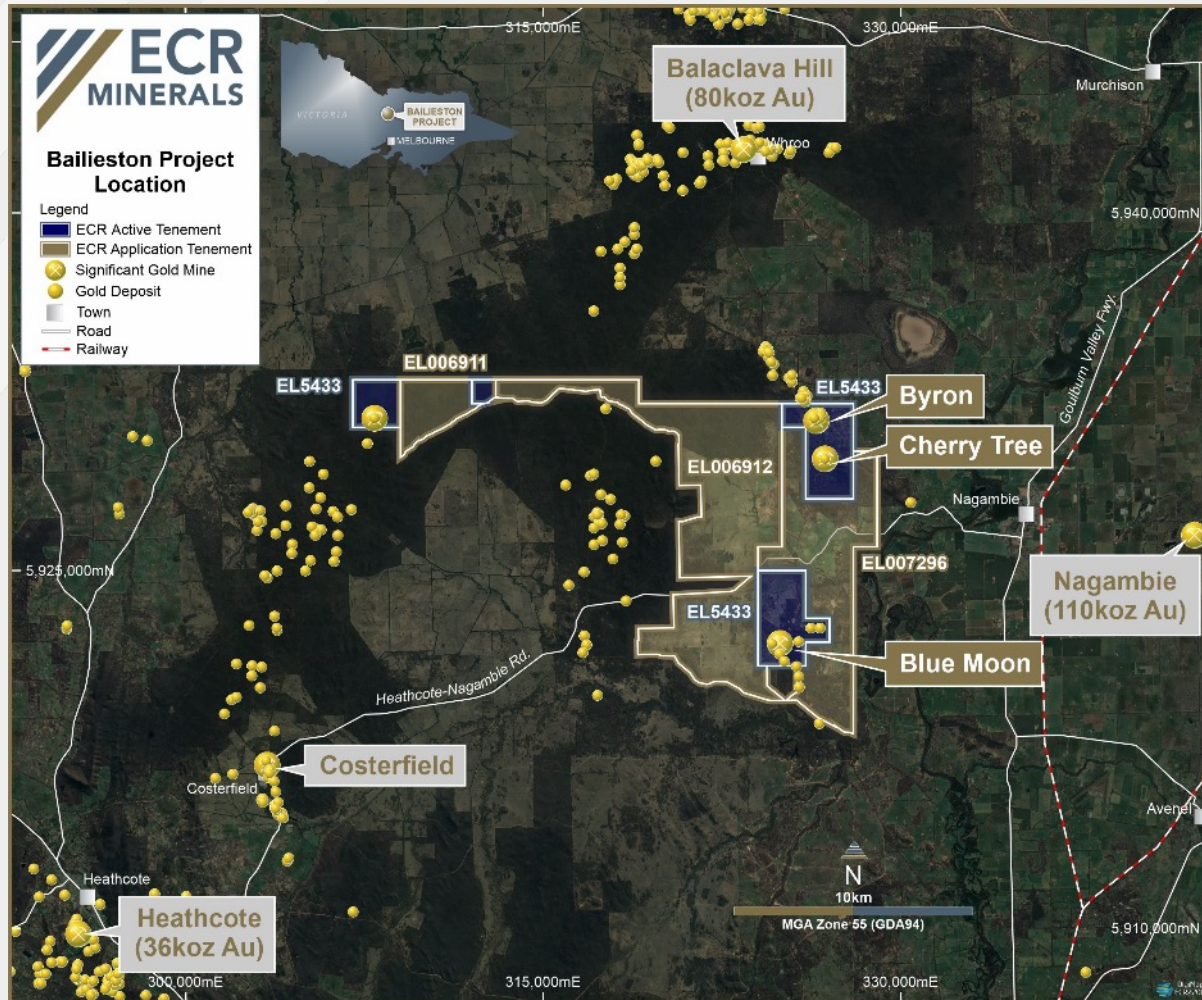
**Creswick** includes a 10km section striking north from Ballarat.

**Tambo** - portions of historic gold mines.  
Other tenement in application.





# Bailiaston / Blue Moon – 100% ECR

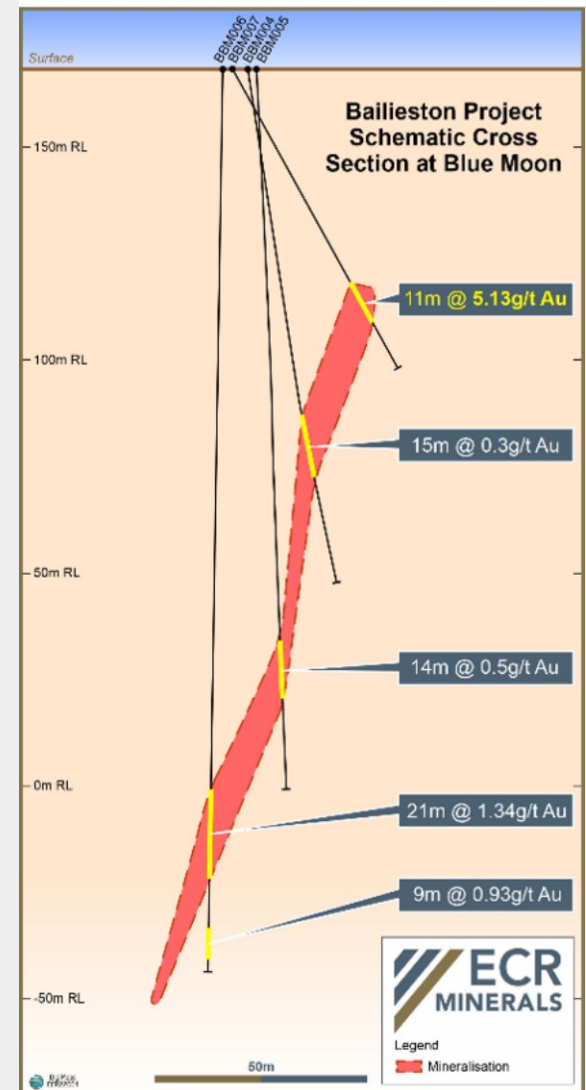


- 47 km east of Kirkland Lake Gold's Fosterville gold mine.
- ECR has drilled 9,485 m since Jan 2021
- Recent encouraging drill results (Byron-Blue Moon)
- Gold and Antimony occurrences (Costerfield-Nagambie, Balaclava Hill)

# Blue Moon / Bailieston

- Unique mineralisation style in the area (Dyke)
- Width and consistency - true width up to 7m
- RC drilling in 2019 :
  - 11m @ 5.13 g/t Au (BBM007) with VG!
  - 21m @ 1.34 g/t Au (BBM006)
- Blind outcrop surface expression identified by As-Sb Geochem (using pXRF)
- Cheap exploration to potential find other 'Blue Moon's'

## Section A-B

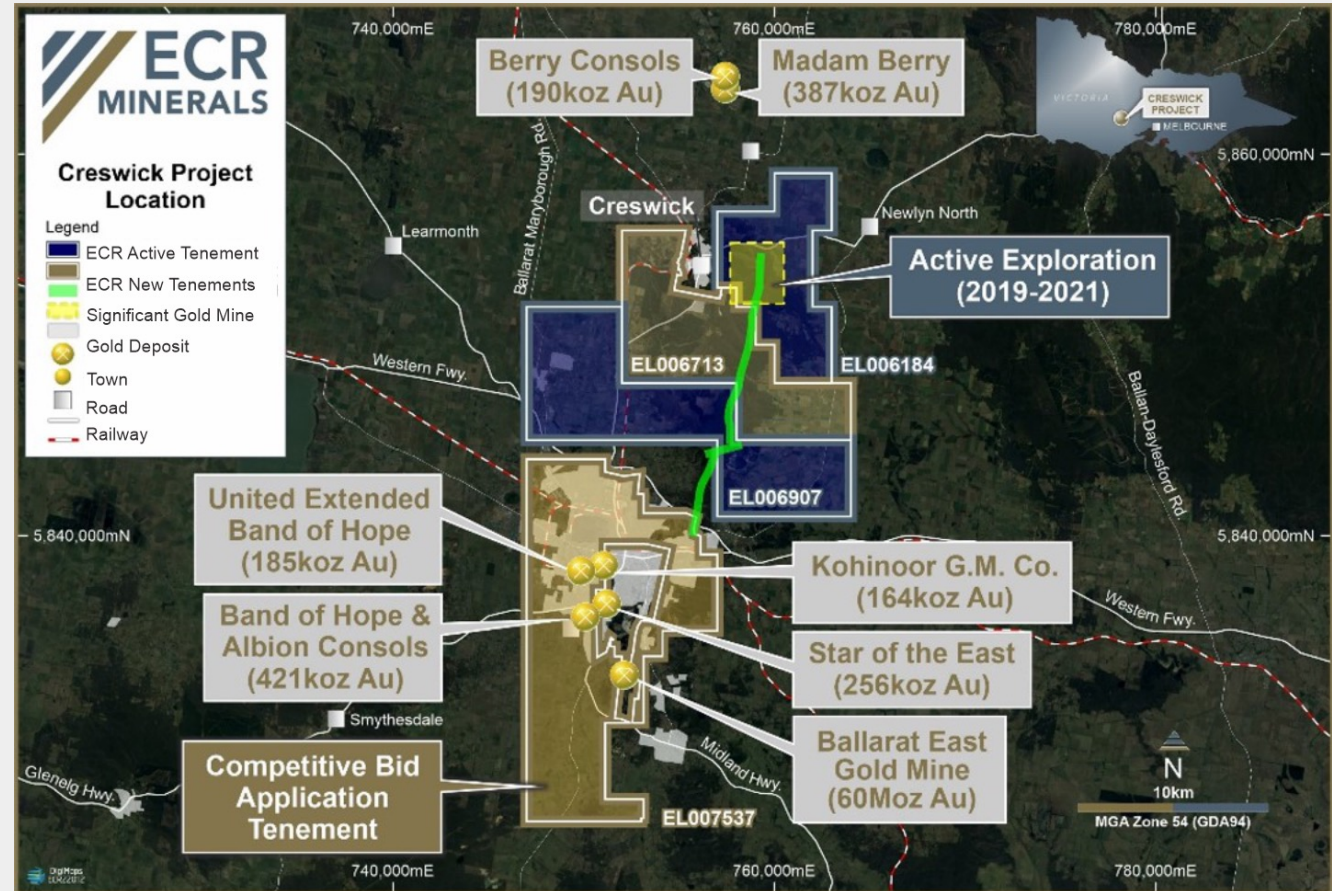




# Creswick – the trend North of Ballarat



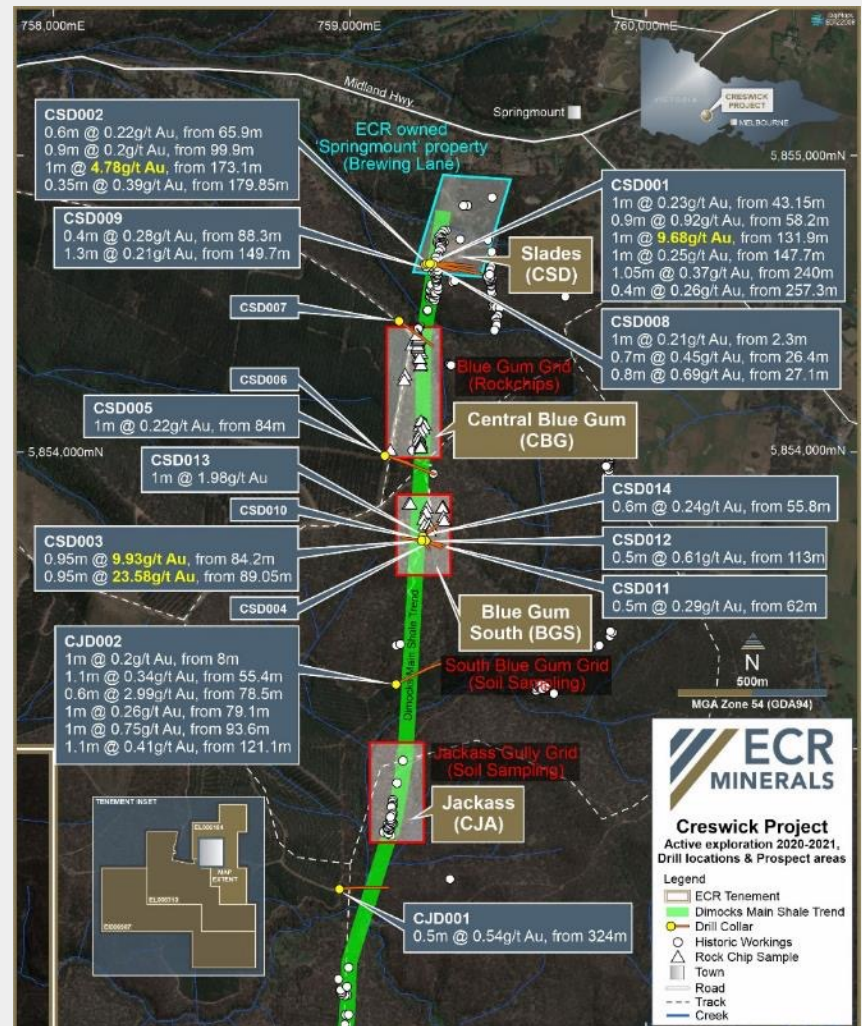
- Historic production 2.5 million ounces from deep leads
- Source not identified
- Likely from adjacent veins
- Creswick to Ballarat North
- Drilling 2023/24
- Soil Geochem
- 10km of mineralised trend to be explored





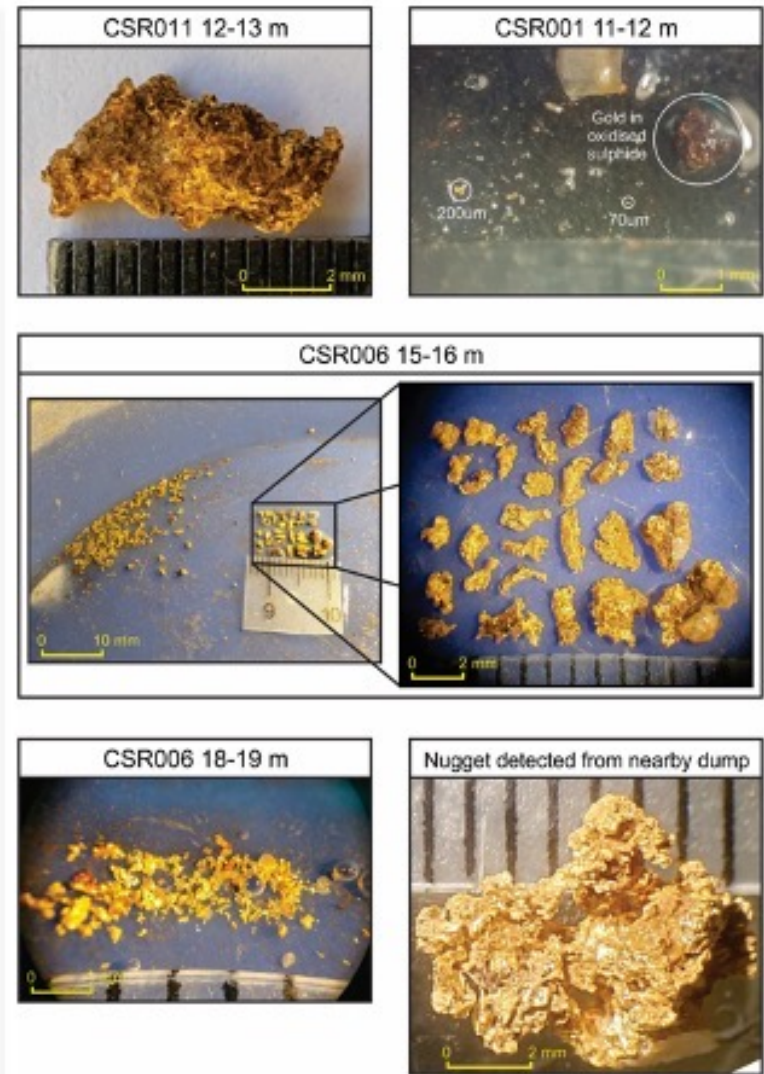
# Creswick Gold

- ECR is the first to drill intensively
- 2021/23 diamond drilling:
  - Similarities with Ballarat
  - Narrow (0.5m-3m wide veins) with coarse-nuggetty gold
  - Gold found in untouched ground (Blue Gum South - i.e CSD003)
- LIDAR mapping indicates parallel systems with no modern exploration.
- Soil sampling on untested systems, results incoming.



# Creswick: unlocking value

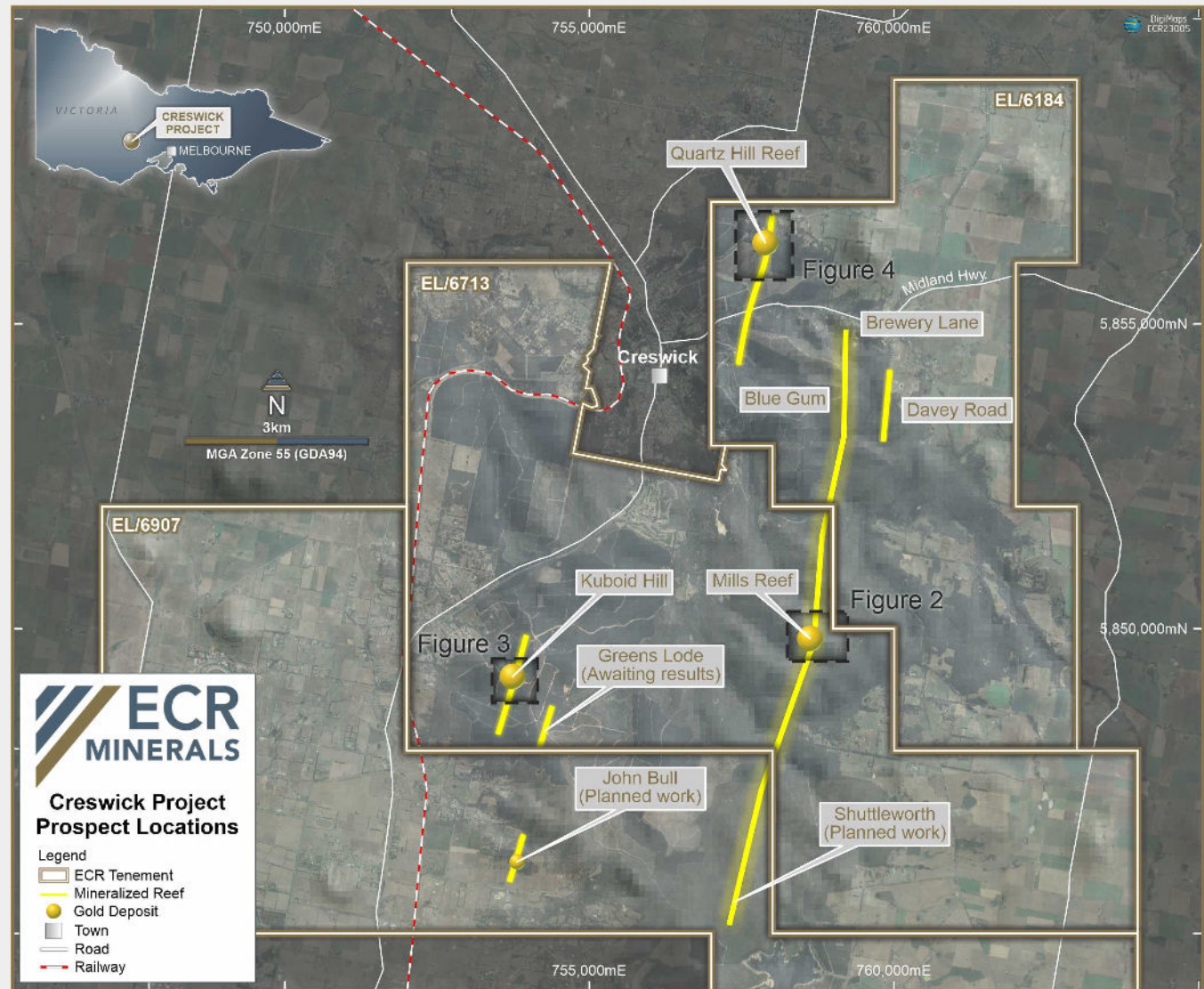
- Very nuggety gold
- Only 300m of the 10km strike has been drilled
- sampling method is key to success
- “Whole of bag” testing yielded a highest grade of 80.97 g/t gold
- Now sampling along strike
- 2019 RC drilling - nine holes grades ranges 0.6 to 44.63 g/t gold



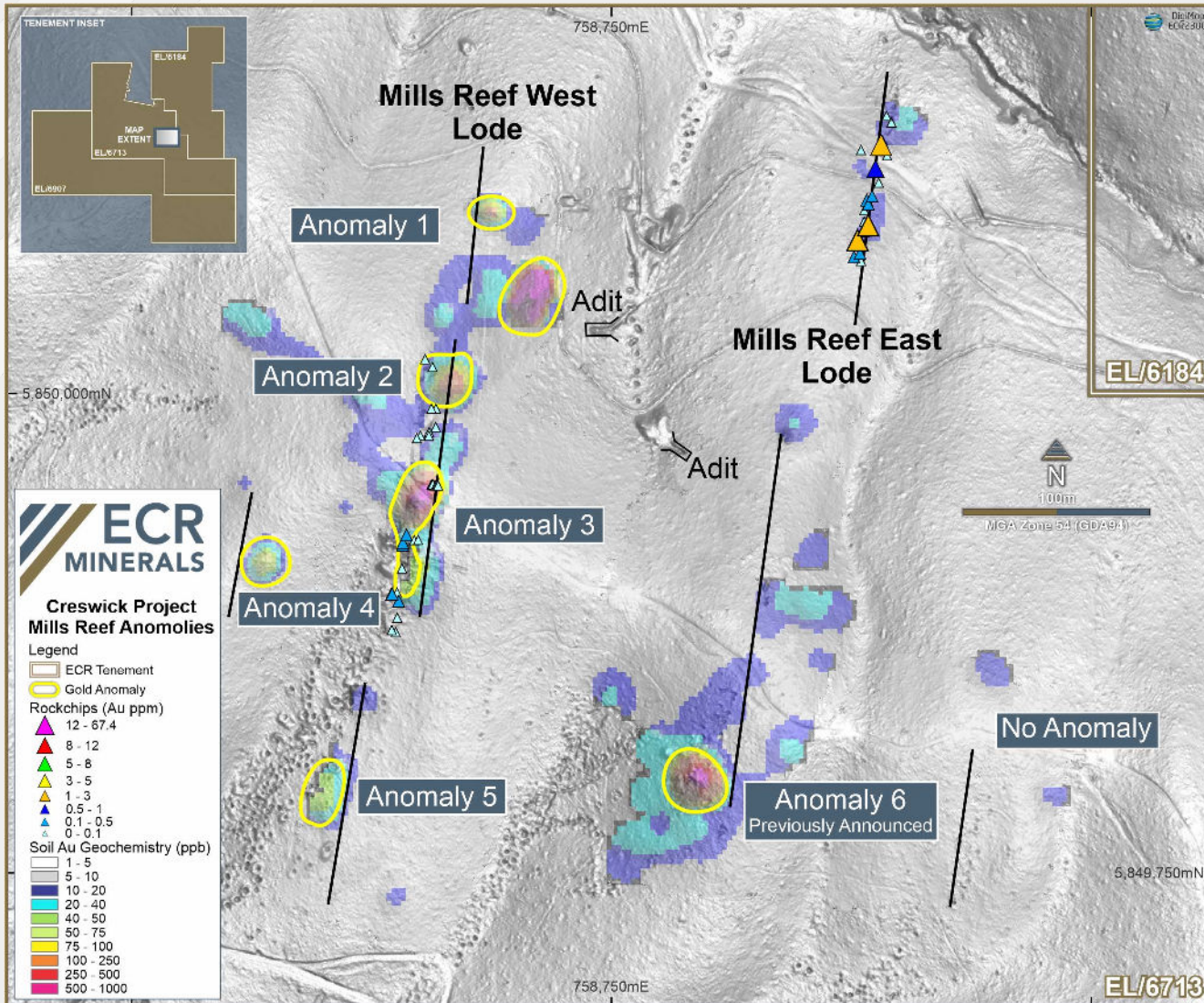


# Creswick – the search for the source

- Soil sampling in progress
- First drill program recently completed
- Drilling to follow soil sampling programs



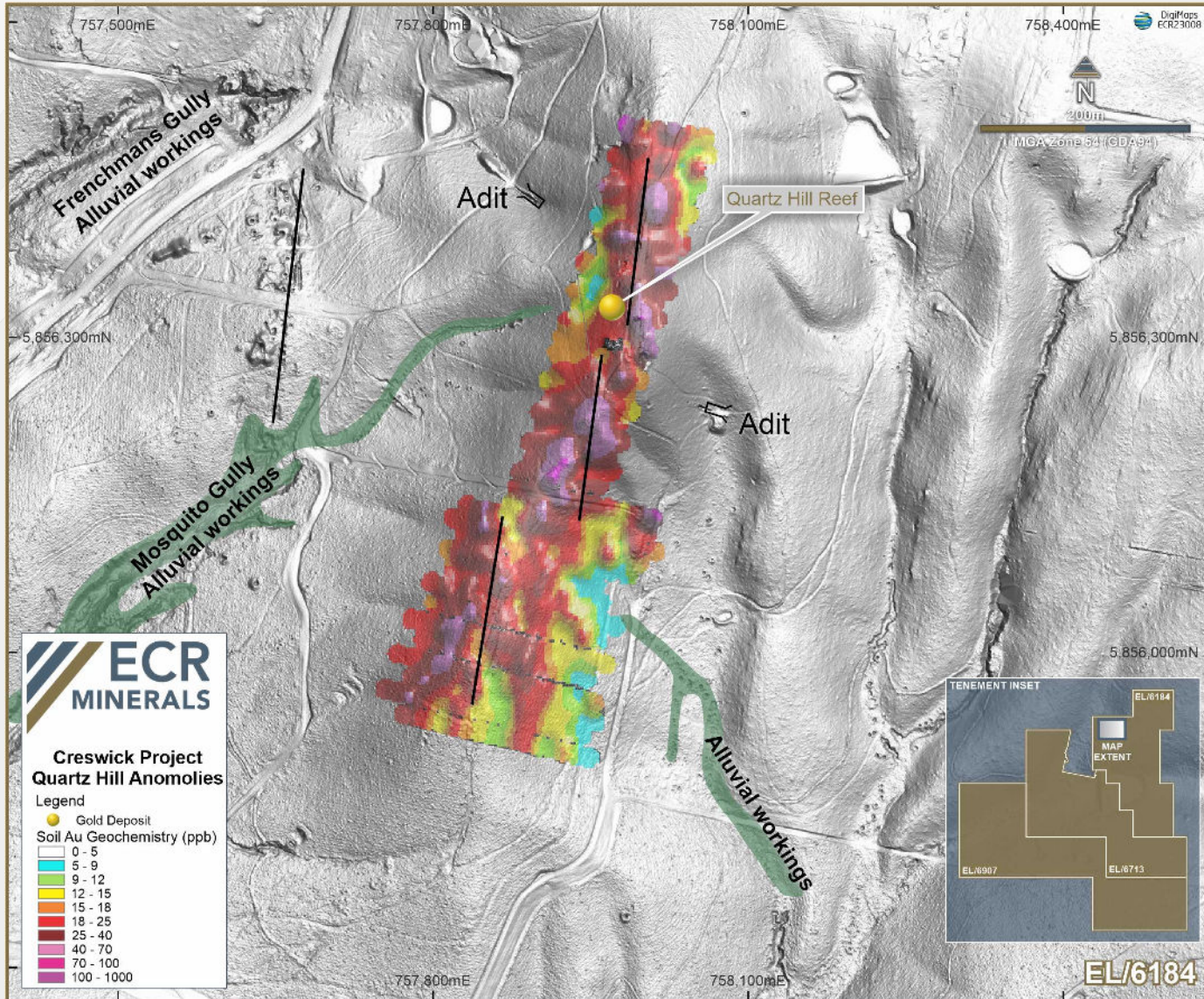
# Creswick Gold – a shift to Geochem



- Recent encouraging rock chip results (Brewery Lane and Mills Reef)
- Highlights
  - 0.25m @ 441.23 g/t Au,
  - 0.15m @ 140.83 g/t Au and
  - 0.25m @ 24.92 g/t Au
- Drill follow up being planned
- Soil sampling results showing Gold in soils (shoots near surface??)



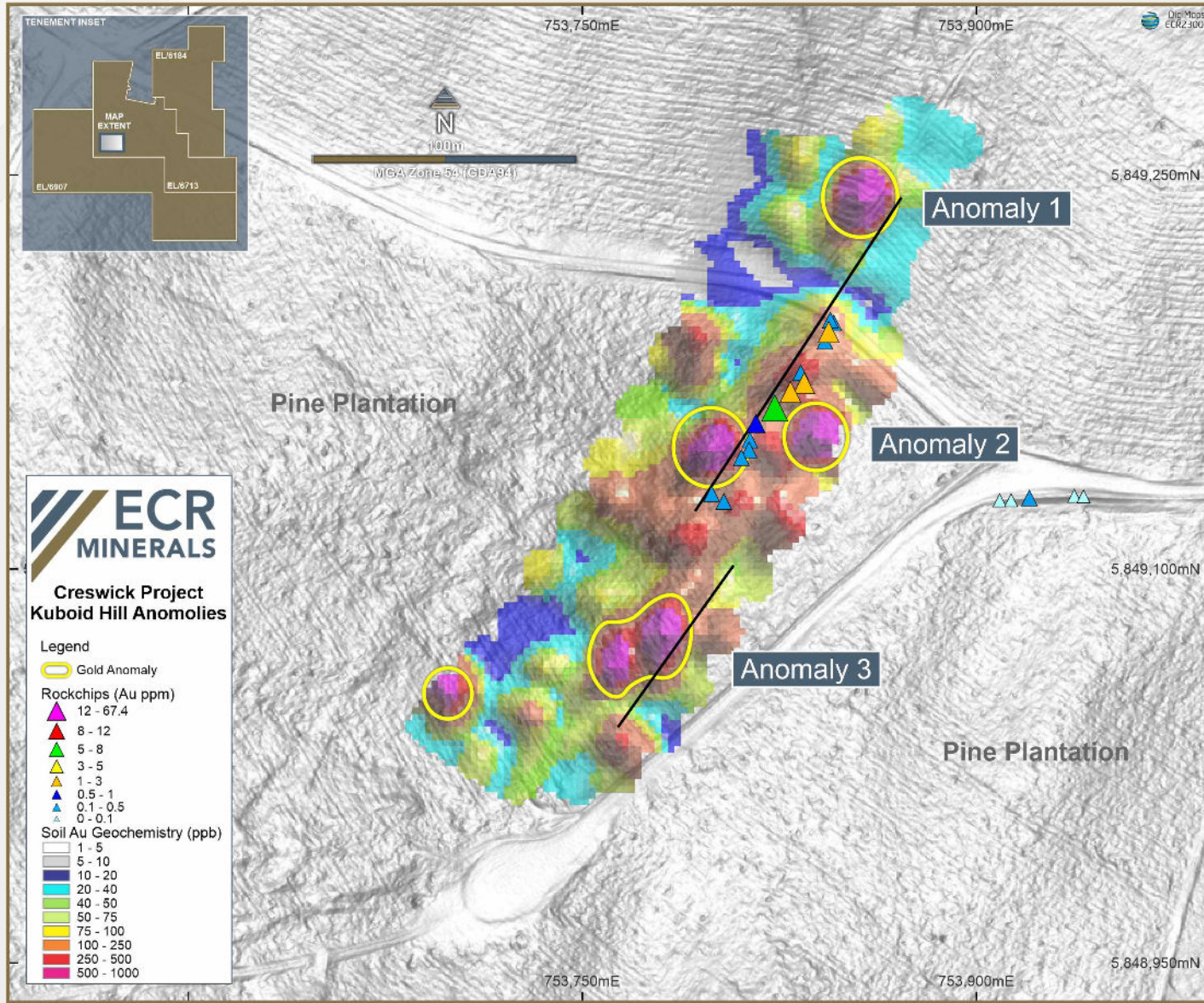
# Creswick Gold- Quartz Hill



- Recent sampling highlights future drill targets
- 300m strike
- As trends(pXRF) highlight Quartz/Fault Systems
- LIDAR mapping shows alluvial workings sourced at Hill



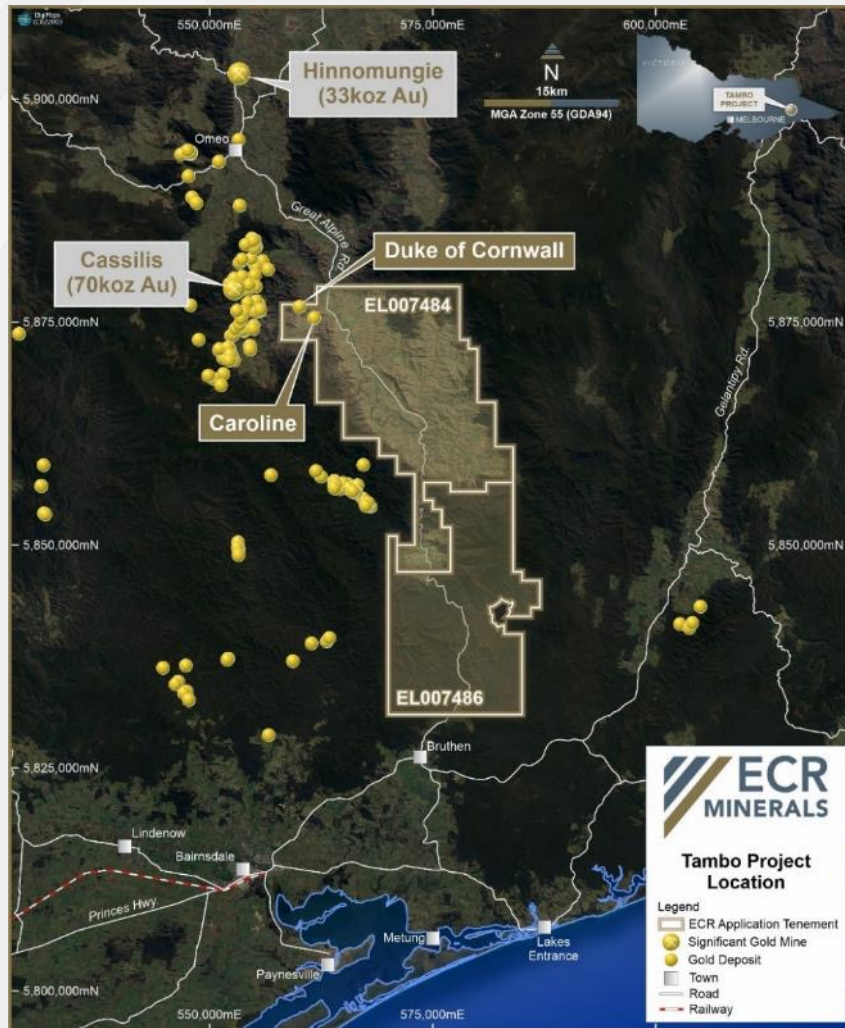
# Creswick Gold- Kuboid Hill



- Recent sampling highlights future drill targets
- 250m strike
- Plenty of other prospects along strike...
- Currently being sampled



# Tambo - 100% ECR



- EL007484 (Granted) (410 sq. km) and
- EL007486 (application) (318 sq. km)
- Historic Swifts Creek/Omeo and Haunted Stream goldfields
- Past gold production of 205,000 and 25,000 oz recorded respectively
- Project generation work has commenced
- Multiple opportunities, known region for other base metal commodities

# Board of Directors



**/ Andrew Haythorpe**  
Chief Executive Officer

Andrew has over 20 years managing listed gold miners and explorers on the ASX and TSX markets as well as working as a mining analyst and exploring for gold as a geologist. As Managing Director of TSX and ASX-listed Crescent Gold Limited, Andrew developed the company from an \$8 million gold explorer to a \$250 million gold producer within four years. He was also Managing Director of top performing ASX-listed gold producer Michelago Resources. As an analyst, Andrew was considered a global leader in the Industrial Minerals sector and rated 12<sup>th</sup> best gold analyst whilst at Hartley Poynton Ltd.



**/ David Tang**  
Non-Executive Chairman

David Tang was previously the President of China Nonferrous Metals Int'l Mining Co. Ltd. (CNMIM) and the Managing Director of China Nonferrous Gold Ltd, an AIM-listed company. China Nonferrous Gold was focused on the Pakrut gold mine in Tajikistan, where first gold was poured in 2015. Mr Tang has previously served as a director to African, South-east Asian and Australian mining and exploration companies. Mr Tang graduated with a Bachelor of Science degree (1988) majoring in computer science from Central-South University, China and holds a Master of Science degree (1991).



**/ Adam Jones**  
Executive Director

Adam Jones is a geologist with over 10 years experience in both mine and exploration geology, mostly in gold. Adam specialises in high-grade narrow vein gold deposits, which Victoria, Australia is well known for. Mr Jones holds a Bachelor of Science degree (2009), majoring in Geology from the University of Ballarat and also completed first class honours at Adelaide University (2010). Adam resides in Central Victoria.



**/ Dr Trevor Davenport**  
Independent Non-Executive Director

Dr Davenport obtained a BSc (Hons) Geology at Southampton University, then his MSc in Mining Geology and Mineral Exploration in 1967, and a PhD in Geology & Exploration Geochemistry at Leicester University in 1970. In 1971 he attained the title of Chartered Engineer after becoming a Member of The Institute of Mining and Metallurgy. Trevor has 63 years experience in the geological and mining industry working as an underground miner, exploration geochemist, exploration and mine geologist and as a lecturer to post-graduate mining geology students at the University of Leicester. Trevor was a director, the exploration manager and chief geologist for Nelson Gold's, Zeravshan Gold Company in Tajikistan from 1994 until end of 1996. From 2004 until 2011 he was Non-Executive Chairman and director of Kryso Resources Plc. Today Dr Davenport is a director at Brix Investments Limited and is also President of the Alderney Society and a director of the Alderney Journal.

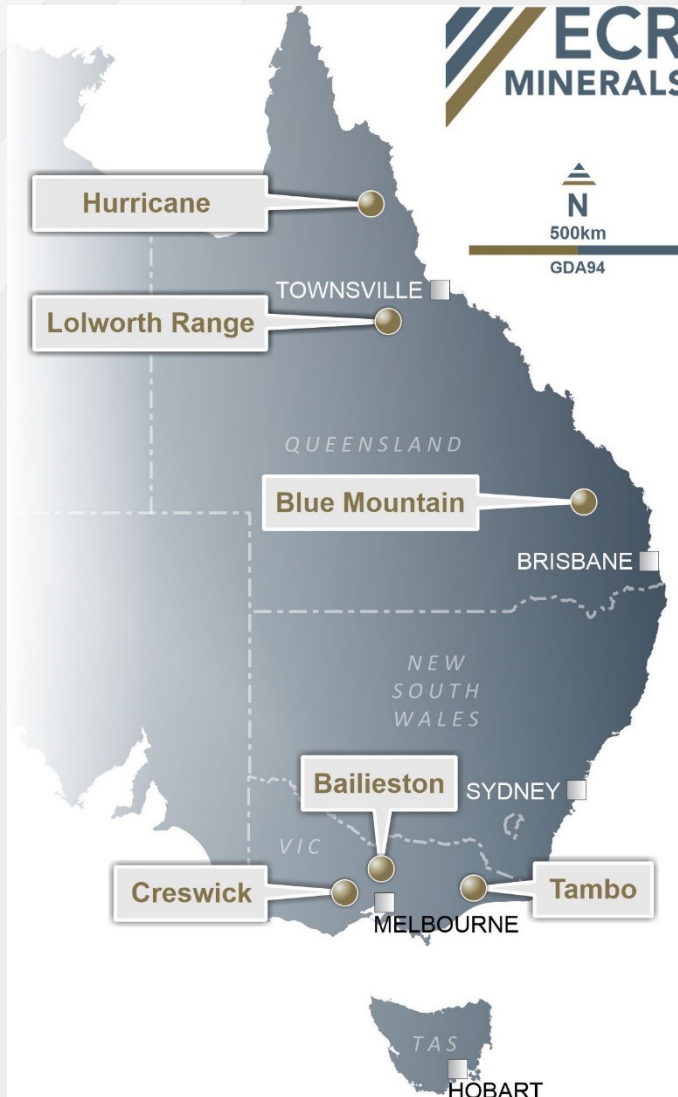


**/ Andrew Scott**  
Non-Executive Director

A strategic communications specialist, Andrew is well-known for his extensive body of work across key global markets, interviewing hundreds of CEOs and fund managers on their sector outlook, strategy and broader economic perspectives. Andrew has worked at Proactive Investors, Sky World News, Reuters and as an editor on ITV Breakfast.



# Victoria and Queensland 2023



- Follow up soils and drilling in Victoria
- Hurricane Drilling to commence Q3 2023
- Initial search for alluvial gold source to commence at Blue Mountain
- Follow up stream and surface sampling Lolworth – possible drilling to follow up any discoveries
- Lolworth follow up already begun!
  - Gold,
  - Rare Earth potential (REE)
  - Niobium Tantalum

# Contact ECR Minerals

**Andrew Haythorpe, CEO**

T3 Hurlingham Studios

Ranelagh Gardens

London SW6 3PA

United Kingdom

**E:** [info@ecrminerals.com](mailto:info@ecrminerals.com)

**T:** +44 (0)20 7929 1010



@ecrminerals

Shares 1,169,546,968

Warrants 149,999,985

Options 117,276,984

[www.ecrminerals.com](http://www.ecrminerals.com)

01/06/2023

ECR MINERALS PLC

